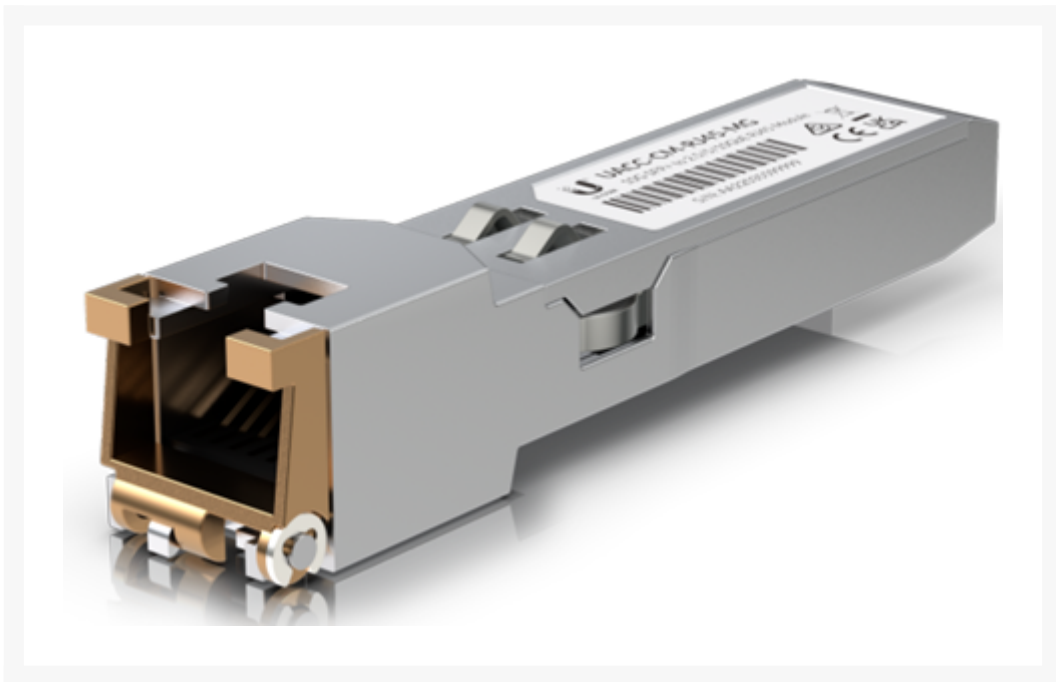




## Ubiquiti | UACC-CM-RJ45-MG | SFP+ Multi-Gigabit Transceiver Module, SFP+ to 10/5/2.5/1 GbE RJ45 supersedes the UACC-CM-RJ45-10G & UF-RJ45-10G

### Product Images

---



### Description

---

Introducing the Ubiquiti Unifi UACC-CM-RJ45-MG, a cutting-edge 10G SFP+ to 10/5/2.5GbE Copper RJ45 Module that revolutionises your network connectivity. Designed for seamless integration into your Unifi ecosystem, this module supports various data rates including 10GbE, 5GbE, 2.5GbE, and 1GbE, providing unparalleled flexibility to meet your network demands.

Crafted with precision, the UACC-CM-RJ45-MG boasts a robust RJ45 connector and is compatible with a range of media, ensuring a reliable and high-speed connection. With a maximum power consumption of just 1.9W, this module balances performance with energy efficiency. The 10Gbps capability over CAT6A cables extends your network reach up to 100 metres, offering the reliability you need for both short and long-distance connections.

Operate with confidence in various environments, thanks to its wide operating temperature range from 0 to 70°C. Whether you're enhancing your home network or optimising your business infrastructure, the Ubiquiti Unifi UACC-CM-RJ45-MG, available in convenient 1-pack options, ensures a seamless and high-performance networking experience. Elevate your connectivity to the next level with this state-of-the-art module, delivering the speed and reliability your network deserves.

# FEATURES

- Supported Media: Copper
- Connector Type: RJ45
- Data Rate: 10GbE/5GbE/2.5GbE/1GbE
- Max. Power Consumption: 1.9W
- Cable Distance 1Gbps (CAT5E): 100m
- 10Gbps (CAT6A): 30m
- Operating Temperature: 0 to 70°C
- Qty in Pack: 1

# WARRANTY

1-year limited warranty

